

Palmetto Expy Commercial Condo—Bank Owned REO!

Price
\$359_K

Price / SF
\$140

SF
2,559

Ceiling
16_{FT}

Built
1976

Sale Type
REO

4788 NW 167th Street ● Miami Gardens, Florida 33014



Doug Driver, CCIM, CMI
Executive Managing Director
☎ (954) 865-1453
✉ dd@meridian-commercial.com

Julie Abolafia, CCIM
Managing Director
☎ (954) 918-4902
✉ ja@meridian-commercial.com

Exclusively Listed by:

 **meridian commercial**
Investment Sales Advisors

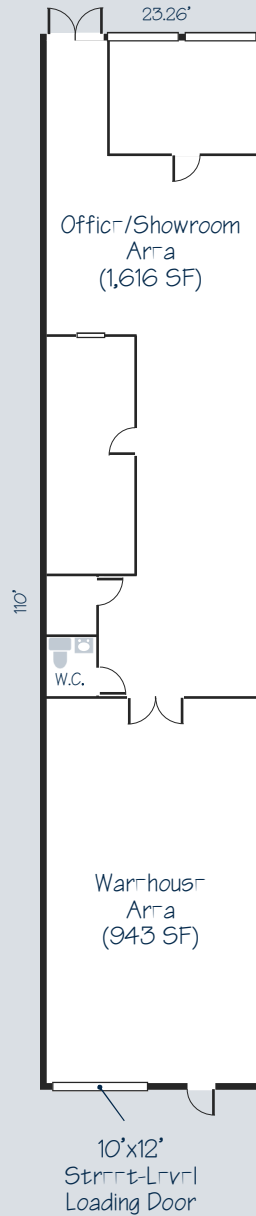
Floor Plan

4788 NW 167th Street,
Miami Gardens, FL 33014

PalmTto Expressway Business Park
Condominium Unit #4788

Area Calculations:
Office/Showroom Area = 1,616 SF
Warehouse Area = 943 SF

Total Area = 2,559 SF



Property

Total Size	2,559 Square Feet
Office	1,616 SF
Warehouse	943 Square Feet
Built	1976
Construction	CBS (Twin "T" Roof)
Ceiling Height	16' Clear Height
Loading Doors	1 Street-Level Loading Door (10' x 12')
Restrooms	1/2 Bathroom
Electric	120/240 Volt
HVAC	Central Air-Conditioning (non-operating)
Life Safety	Security Gates (multiple types)
Parking	Open Parking (113 spaces + 5 handicap spaces)
COA Fee	\$300/Month (Estimated)